

## Purified Anti-Human CD3 Antibody[UCHT1], Functional Grade

catalog number: E-AB-F12300

**Note:** Centrifuge before opening to ensure complete recovery of vial contents.

### Description

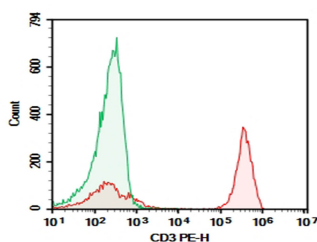
<b>Reactivity</b>	Human
<b>Immunogen</b>	Recombinant Human CD3 protein
<b>Host</b>	Mouse
<b>Isotype</b>	Mouse IgG1, $\kappa$
<b>Clone</b>	UCHT1
<b>Purification</b>	>98%, Protein A/G purified
<b>Buffer</b>	Sterile PBS, pH 7.2. < 1.0 EU per mg of the antibody as determined by the LAL method.

### Applications

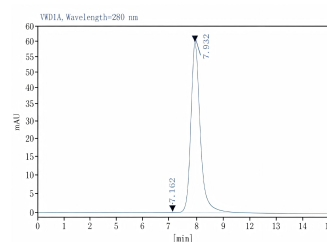
### Recommended Dilution

<b>FCM</b>	2 $\mu$ g/mL (0.5 $\times$ 10 <sup>6</sup> - 1 $\times$ 10 <sup>6</sup> cells)
<b>Depletion</b>	Reported in the literature

### Data



Human peripheral blood lymphocytes were stained with 0.2  $\mu$ g Purified Anti-Human CD3 Antibody[UCHT1], Functional Grade (Right) and 0.2  $\mu$ g Mouse IgG1,  $\kappa$  Isotype Control (Left), followed by PE-conjugated Goat Anti-Mouse IgG Secondary Antibody.



Monomer purity  $\geq$ 95% as determined by analytical size-exclusion chromatography (SEC)

### Preparation & Storage

<b>Storage</b>	Store at 4°C valid for 12 months or -20°C valid for long term storage, avoid freeze / thaw cycles. This preparation contains no preservatives, thus it should be handled under aseptic conditions.
<b>Shipping</b>	Ice bag

### Background

CD3 $\epsilon$  is a 20 kD chain of the CD3/T cell receptor (TCR) complex, which is composed of two CD3 $\epsilon$ , one CD3 $\gamma$ , one CD3 $\delta$ , one CD3 $\zeta$  (CD247), and a T cell receptor ( $\alpha/\beta$  or  $\gamma/\delta$ ) heterodimer. It is found on all mature T lymphocytes, NK T cells, and some thymocytes. CD3, also known as T3, is a member of the immunoglobulin superfamily that plays a role in antigen recognition, signal transduction, and T cell activation.

None (Azide-Free, Low Endotoxin) are perfectly suited to be used in culture or in vivo (for nonhuman studies) for functional assays blocking, neutralizing, activation or depletion where the presence of azide may damage cells or exogenous endotoxin may signal or activate cells.

### Application References

#### For Research Use Only

Mark Wunderlich, et al. Blood. 2014 Jun 12;123(24):e134-44.

---

**For Research Use Only**

Toll-free: 1-888-852-8623  
Web: [www.elabscience.com](http://www.elabscience.com)

Tel: 1-832-243-6086  
Email: [techsupport@elabscience.com](mailto:techsupport@elabscience.com)

Fax: 1-832-243-6017

Rev. V3.0